



LIQUID

E-NEWSLETTER

IT'S GROUNDHOG DAY!

IS WINTER HERE TO STAY?



It's Groundhog Day!

Is spring coming early, or do we still have some cold days on the way?

If the temperatures do dip, especially for an extended period of time, it's important to know how to protect your pipes.

When temperatures dip below freezing, customers are encouraged to do the following to keep their pipes from freezing:

- **Locate the main water shut-off valve for your home so that it can be shut off quickly in the event of a water pipe leak.**
- **Disconnect garden hoses from the spigot. Turn off irrigation systems.**
- **Keep a slow trickle of water flowing through faucets. This will help prevent the water in pipes from freezing.**
- **Keep kitchen and bathroom cabinet doors open to allow warm air to circulate around pipes.**

If pipes do freeze:

- **Shut off the water immediately. Do not attempt to thaw pipes without first turning off the main shut-off valve.**
- **Thaw pipes with warm air – not direct heat. Never use any type of open flame to attempt to thaw pipes.**
- **Be careful turning water back on. Once pipes are thawed, slowly turn the water back on and check pipes and joints for cracks or leaks.**

Planning your Spring gardening? Make sure to use native plants!

Are you planning your Spring gardening and landscaping?

Make sure to incorporate native plants this year!

Hilton Head PSD and Clemson University's Extension Service urge the use of native plants in our island landscapes to help conserve water, encourage wildlife, and make your landscape maintenance easier!

Native plants thrive on their own: They require much less watering and less maintenance in general. **Why? Because they're adapted to your local soil and climate conditions.**

You can also use mulch to reduce water use — and, of course, make sure your irrigation system is free of leaks and aimed at what actually needs to be watered.

(Remember: Local ordinance also requires that all irrigation systems have a working rain gauge, and that you're only watering your lawn no more than twice per week).

Native plants also help the environment by providing natural habitats in your lawn – helping birds, pollinators and other animals and insects thrive.

Looking for a local place to buy native plants? Check out the native plant sale next month at the Coastal Discovery Museum! (See details below)





NATIVE PLANT SALE



MARCH 16, 2024
Saturday 10 AM - 1 PM

From **VERDANT VINES** to **BLOOMING BUSHES** and everything native in between!



PRO TIP!
Native plants are adapted to the local environment and require little or no care at all

Local plants attract butterflies, wildlife, birds, and pollinators!



1 gal. plants \$10.00
3 gal. plants \$17.00

CASH & CHECKS ONLY



70 HONEY HORN DRIVE, HILTON HEAD ISLAND, SC, 29926

Learn more about our Recycled Water Program

Did you know that the PSD recycles more than a billion gallons of wastewater each year?

This water is used to nourish multiple wetlands in Palmetto Hall and Hilton Head Plantation.

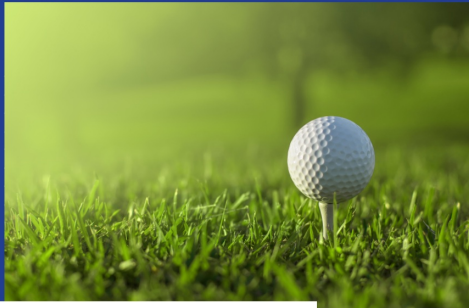
It's just another way we can help save water — and help protect our beautiful little island.

This program also helped the PSD earn its [Certified Audubon Cooperative Sanctuary status](#), as the wetlands the Recycled Water Program nourishes serve as important habitats to many different birds and other species!

**THE PSD
RECYCLES MORE
THAN 1 BILLION
GALLONS OF
WASTEWATER
EACH YEAR.**



**The PSD helps keep our island's
golf courses green!**



HEY, GOLF LOVERS



Our recycled water also plays a vital role in the Hilton Head Island's economy and ecology by providing irrigation water for 12 golf courses.

And while this water is not used as drinking water, it does help save our drinking water supply!

You can learn more about how our Recycled Water Program works by clicking the button below:

Visit our website



**Flush away water
waste with the
WaterSense label.**



Flush away water waste and save up to 13,000 gallons of water per year by replacing old, inefficient toilets in your home with WaterSense labeled models!

Toilets are by far the main source of water use in the home, accounting for nearly 30 percent of an average home's indoor water consumption. Older, inefficient toilets that use as much as 6 gallons per flush also happen to be a major source of wasted water in many homes.

Recent advancements have allowed toilets to use 1.28 gallons per flush or less while still providing equal or superior performance. This is 20 percent less water than the current federal standard of 1.6 gallons per flush. The WaterSense label is used on toilets that are independently certified to meet rigorous criteria for both performance and efficiency. Only water-saving toilets that complete the certification process can earn the WaterSense label.

Visit the [WaterSense website](https://www.epa.gov/watersense)



Hilton Head PSD's tap water continues to meet or exceed all water quality standards

The tap water provided by Hilton Head PSD continues to meet or exceed all water quality standards set by the U.S. EPA and S.C. Department of Health and Environmental Control. The PSD has a longstanding track record of water quality compliance.

About 86% of the PSD's drinking water is sourced and supplied from the island's own groundwater. Most of that water, about 62%, comes from the PSD's Reverse Osmosis (RO) Drinking Water Treatment Facility on Jenkins Island, which uses advanced membrane treatment to convert the island's own brackish groundwater into high-quality drinking water. RO is the same treatment method used in the production of many brand-name bottled waters and other beverages. The island's own freshwater groundwater continues to account for about 13% of the PSD's drinking water, while another 11% comes from our Aquifer Storage & Recovery (ASR) Facility. The ASR facility stores treated drinking water in the brackish portion of the underground aquifer in the winter months and then re-treats and distributes the water in the spring and summer months.

The remaining 14% of the PSD's drinking water is purchased wholesale from the Beaufort-Jasper Water & Sewer Authority (BJWSA) and blended in the PSD's water distribution system. All the water purchased from BJWSA continues to meet or exceed all water quality standards. The wholesale water quality is monitored at its entry point to the PSD's water distribution

system. The PSD has the capability to shut off the wholesale water supply in the event of any water quality issues.

You can view the PSD's water quality reports [here](#).

Interested in a tour of our Reverse Osmosis Facility? Just drop us a note at info@hhpsd.com

No need to worry about PFAS

If you've heard about harmful PFAS being found in drinking water, then we have good news: There are no known PFAS-related environmental pollution sites within the PSD's service area, and none of the six PFAS compounds proposed to be regulated have been detected in the PSD's groundwater wells, according to recent monitoring.

The PSD monitors for more than 35 types of PFAS. The most recent monitoring showed no detection of any PFAS in our groundwater wells.

The PSD will continue to monitor for PFAS, including as part of the U.S. EPA's Unregulated Contaminant Monitoring Rule program, which the PSD has participated in for many years.

The PSD will continue to implement any and all PFAS barrier technologies available to it. To that end, the PSD is seeking a grant from the state government to expand the capacity of our Reverse Osmosis plant in order to provide an even greater percentage of our water supply from the plant.

Check out our PFAS fact sheet [here](#).

No lead in our drinking water

On a similar note, there is no evidence of lead in our drinking water.

Decades of analysis have proven there is no lead in the drinking water Hilton Head PSD provides to its customers. Lead is not present in the PSD's groundwater sources, nor is it found in the drinking water purchased wholesale from the mainland utility.

Lead in drinking water generally comes from private-side pipes or plumbing rather than the drinking water source. There are no lead water pipes in the PSD's public water distribution system.

Most of the PSD's water distribution system, as well as most customers' private-side water laterals, are plastic (HDPE or PVC). Lead piping was banned by the federal government in 1986. Beaufort County banned lead piping even earlier, in 1979.

Read

More

Don't wait 'til your septic system breaks to get connected

Don't risk your family's health.



Still not connected to the sewer system on Hilton Head?

Don't wait 'til your septic system breaks to make the switch!

A leaking septic system can be hazardous to your health — and can't legally be repaired where sewer connections are available (which means all of Hilton Head Island).

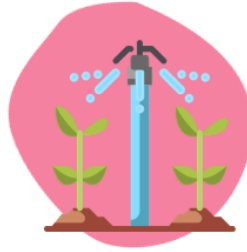
Financial assistance is available.

Learn
More

Show the planet some love by saving water at home!



Only run full loads in the washer and the dishwasher



Make sure your irrigation system is efficient



Take shorter showers



Save water used for rinsing produce to water plants



Fill up the sink while washing dishes

Show the planet — and your wallet — a little extra love this month by following these water-saving tips:

- ♥ Only run full loads in the washer & dishwasher
- ♥ Make sure your irrigation controller has a working rain gauge & that you're following HHI's town ordinance
- ♥ Take shorter showers (aim for 5 minutes!)
- ♥ Recycle water used for rinsing produce to water your plants
- ♥ Turn off the tap & fill up the sink instead when hand washing dishes

Keep tabs on your household's water use

Did you know you can track your household's water use

on our online portal?

It's a great way to make sure the household is sticking to your water-saving goals — and the new portal even has a “leak alert” feature that can help you figure out if you have a potential leak in your home.

Any leaks that are promptly fixed can qualify you for a leak adjustment to your water bill.

Check it out our customer portal!



Keep track of your family's water use with our online portal!



Login Here

WHY CAN'T I FLUSH WIPES?

A SCIENCE EXPERIMENT TO TEST IF "FLUSHABLE" WIPES REALLY DISSOLVE

MATERIALS:

- 2 CLEAR BOWLS OR CUPS OF WATER
- A SPOON
- A STOPWATCH OR TIMER
- TOILET PAPER
- "FLUSHABLE" WIPES



INSTRUCTIONS:

1. FILL 2 CLEAR BOWLS OR CUPS WITH WATER
2. ADD 2 SQUARES OF TOILET PAPER TO ONE CUP OR BOWL
3. ADD 1 "FLUSHABLE" WIPE TO THE OTHER CUP OR BOWL
4. STIR BOTH GENTLY WITH A SPOON
5. SET A TIMER FOR 10 MINUTES
6. OBSERVE IF EITHER THE TOILET PAPER OR THE WIPE DISSOLVED MORE. WHAT HAPPENS IF YOU STIR THEM AGAIN? WHAT IF YOU TOUCH THEM WITH YOUR FINGERS? DO THEY FALL APART?

Visit hhpsd.com to learn more about what not to flush.



Teach your littles why they can't flush wipes with this fun science experiment!

Even the so-called "flushable" wipes can clog your pipes.

This experiment shows how they don't dissolve in the same way toilet paper does.

Download it — and a bunch of other free resources — on our website:

What Not To
Flush

What you need to know about the PSD's Redistricting

Have you kept up with the PSD's Redistricting?

In December, Hilton Head PSD adopted revised voting districts that moved the Commission to seven, single-member districts comprising its service area.

In the November 2024 general election, PSD Voting Districts 2,3,4 and 6 will be up for election. In the November 2026 general election, PSD Voting Districts 1,5, and 7 will be up for election. Commissioners are elected to four-year terms.

The new voting districts can be viewed at the link below.

View New Voting Districts

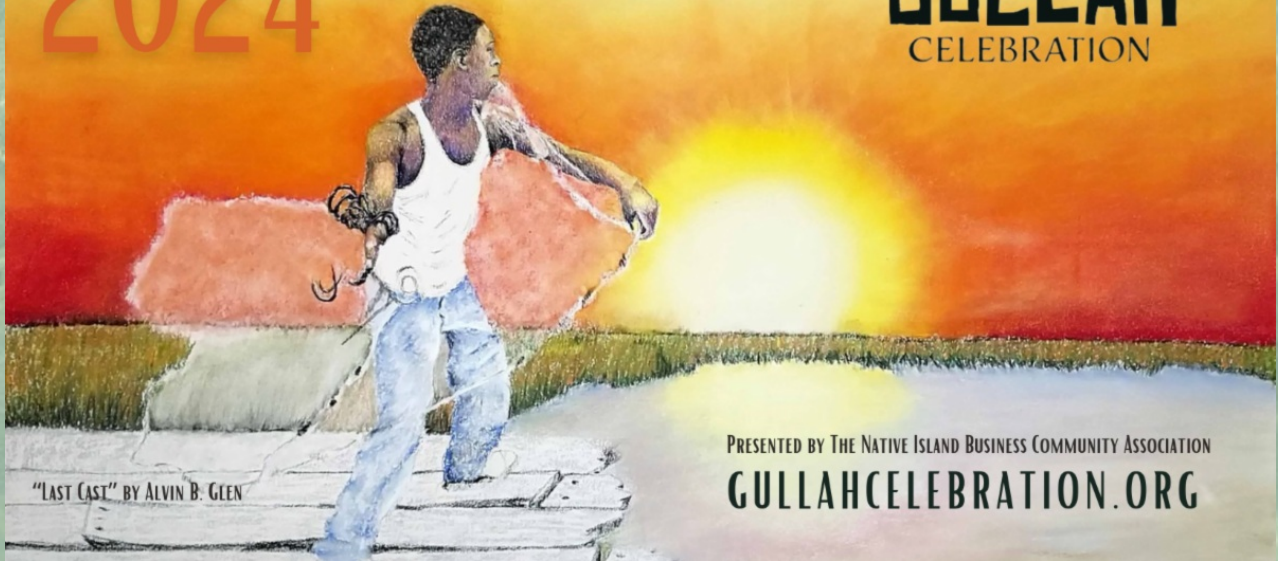


Learn about the PSD Commission's
Redistricting before the 2024 election

Community Happenings

JAN 28 - MAR 1
2024

HILTON HEAD ISLAND
GULLAH
CELEBRATION



PRESENTED BY THE NATIVE ISLAND BUSINESS COMMUNITY ASSOCIATION
GULLAHCELEBRATION.ORG

Hilton Head Island Gullah Celebration

The Hilton Head Island Gullah Celebration showcases the rich cultural heritage of the Gullah people and their history on Hilton Head Island. Hilton Head Island Gullah Celebration programming includes a variety of events designed to attract residents, regional, national, and international travelers. Learn more & view the schedule of events [here](https://gullahcelebration.org).

Hilton Head PSD Affiliations

We are proud to partner with the following organizations.





American Water Works
Association

MORE
INFORMATION

