

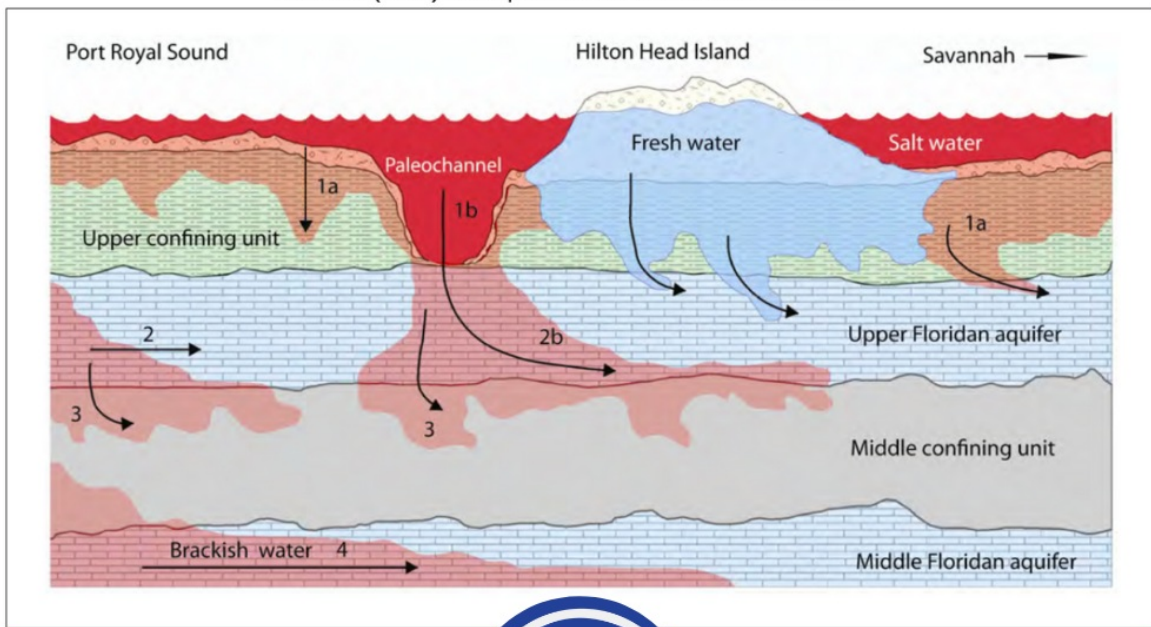


LIQUID

E-NEWSLETTER

PSD updates groundwater model to plan for future supply.

SCDHEC (2021) Conceptual Model of Saltwater Intrusion



The PSD is planning for future water supply and recently completed an update of its hydrogeologic model of the groundwater system on Hilton Head Island. The model is a tool used to make assessments of the effects of various water resource development options. The model was developed by PSD hydrogeologist Chris Foldesi of Nutter & Associates in Asheville, N.C., and included extensive monitoring of the aquifer system by Foldesi and PSD staff.

The PSD has adequate and diverse sources and supplies of water, but continues to face the threat of ongoing saltwater intrusion into the freshwater Upper Floridan Aquifer. To prepare for the potential loss of freshwater production wells, and for future growth, the PSD is considering options such as the addition of more Aquifer Storage & Recovery (ASR) wells and additional reverse osmosis treatment of brackish groundwater. The groundwater model helps the PSD identify the optimal locations for these vital water supply assets.

“We continuously plan for the future of our water supply on Hilton Head Island,” said PSD General Manager Pete Nardi. “We must be stewards of our most precious natural resource – water – and we always begin our planning with the groundwater science as our guide.”

ASR is a supply technique wherein treated drinking water is stored in the aquifer during the winter months of lower demand and then withdrawn and retreated for distribution during high-demand spring and summer months. The PSD constructed the island’s first ASR well in 2011. The PSD also currently produces water by treating brackish groundwater in its Reverse Osmosis Drinking Water Treatment Facility on Jenkins Island, which began operations in 2009.

Pete Nardi

**AMERICAN WATER
WORKS
ASSOCIATION
DIVISION TRUSTEE**



Hilton Head PSD's Pete Nardi named American Water Works Association Division Trustee

The PSD's General Manager Pete Nardi has been named a Trustee of the American Water Works Association (AWWA) Water Conservation Division.

The AWWA is an international, nonprofit, scientific and educational society dedicated to providing total water solutions assuring the effective management of water. Founded in 1881, it is the largest organization of water supply professionals in the world. Its membership includes over 4,300 utilities that supply roughly 80 percent of the nation's drinking water and treat almost half of the nation's wastewater.

"I'm excited to continue volunteering with the Water Conservation Division," said Nardi. "It's an honor to work with so many outstanding water professionals who are promoting water conservation and efficiency as tools for effective water resource planning and management and advancing the science of water use and efficiency across our country."

[Read
More](#)

**Spring is only a few weeks away!
Start planning your landscape now.**



Spring officially starts on March 20 — so it's time to start planning your spring landscape!

Remember to factor native plants into your landscaping plan to help save water (and to save yourself time on maintenance). Check out our Clemson partner's handy native plant database [here](#) to start planning now!

Native plants aren't the only way you can have a water-smart landscape. Your landscape design itself can also contribute to how much water is required to keep your plants alive. For example, planting strategic shade trees can keep your lawn and other plants cool during the hottest parts of the summer — requiring less water. On the other hand, planting a rain garden can help save your lawn from flooding during the rainy season. Learn more from WaterSense [here](#).

Another big factor? Your soil health! From WaterSense: *"Healthy soils cycle nutrients effectively, minimize runoff, retain water, and absorb excess nutrients, sediments, and pollutants. Have your soil tested for nutrient content, pH, soil composition, and organic matter content."*

**Forget March Madness —
it's "Mulch Madness" time!**

Got Mulch?



Cover open ground with wood chips or yard clippings to **hold moisture** in the soil and **save on watering**.



#MulchMadness

Add mulch to save water + protect your soil

From WaterSense:

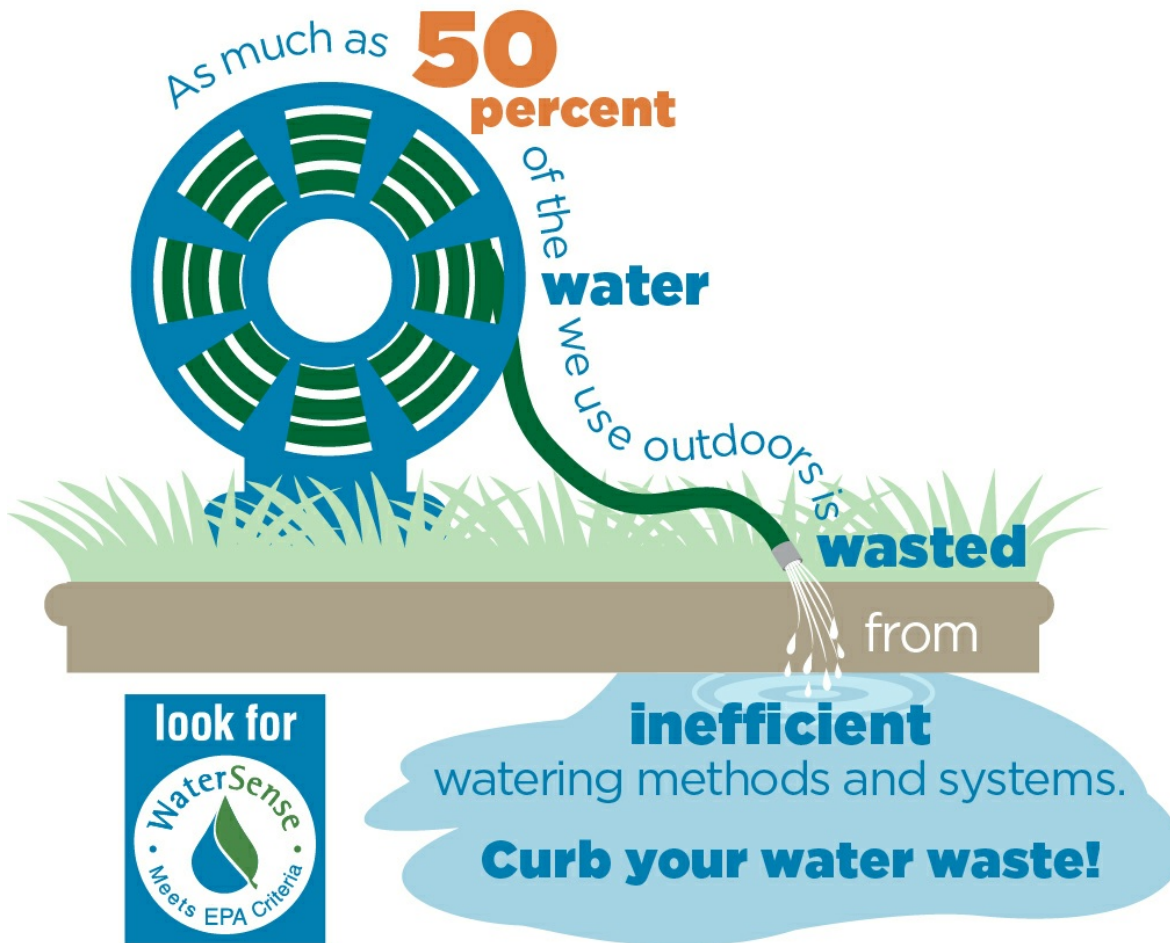
Adding mulch not only makes a more attractive landscape, but it also adds an extra layer between plant roots and air, helping to protect plants in a variety of ways. Mulch helps reduce evaporation, which allows soil to retain water longer and means plants require less frequent watering. Mulch also helps plants thrive by inhibiting weed growth, preventing soil erosion, and moderating soil temperature.

Different plants require different soil conditions, so it's best to choose a mulch type based on plant varieties and their soil needs. Organic mulch such as hardwood chips, straw, leaves, pine needles, or grass clippings will help improve the condition of soil, by adding nutrients as it decomposes. Inorganic mulches like rocks, pebbles, or gravel may help to eliminate weeds. Avoid using rock mulches in sunny areas or around non-arid climate plants, as they radiate large amounts of heat and promote water loss that can lead to scorching.

Applying mulch to a depth of three to four inches provides the right coverage for most plants; excessive amounts of mulch can restrict water flow to plant roots. Leave a few inches of space between organic mulches and the base of trees or other woody plants to prevent rot. Don't forget to pull any weeds prior to mulching and spread evenly to prevent thin areas where the mulch can't do its job.

Learn
More

Don't Forget About Your Irrigation Controllers!



Switching to a WaterSense-labeled irrigation controller can save you time on lawn maintenance as well as help you save money on your water bill.

It's also important to check your irrigation system for leaks periodically, and make sure you're not creating any unnecessary runoff (i.e., there's no need for sprinklers to water your sidewalks or driveway!). Before the warmer season starts, make sure your sprinkler heads are all pointing in the right direction to water **ONLY** what needs to be watered.

And don't forget: The Town of Hilton Head Island's ordinance requires

that your irrigation system has a working rain gauge and that you only use it twice per week.



Hilton Head PSD wants you to help save water.
Know the local irrigation law:

- Single family homes with even-numbered addresses irrigate on Tuesdays and Saturdays only.
- Single family homes with odd-numbered addresses irrigate on Wednesdays and Sundays only.
- Commercial buildings irrigate on Mondays and Thursdays only.

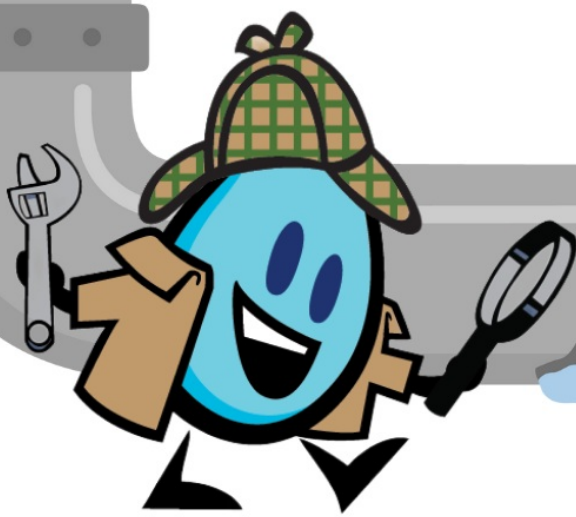
***It's the law.
It's the right thing to do!***



hhpsd.com
681-5525

Learn
More





Get ready to be a leak detective.



March 14–20, 2022
Fix a Leak Week

www.epa.gov/watersense/fixaleak

Get Ready For Fix a Leak Week!

Are you ready to chase down leaks? Household leaks can waste nearly 1 trillion gallons of water annually nationwide, so each year we hunt down the drips during Fix a Leak Week.

Mark your calendars for EPA's annual Fix a Leak Week, March 14 through 20, 2022—but remember that you can find and fix leaks inside and outside your home to save valuable water and money all year long.

Did you know the average

household's leaks can account for nearly 10,000 gallons of water wasted every year? Common types of leaks found in the home are worn toilet flappers, dripping faucets, and other leaking valves. These types of leaks are often easy to fix, requiring only a few tools and hardware that can pay for themselves in water savings.

Here are some helpful tips to get you ready to hunt down household leaks later this month:

- Take a look at your water usage during a colder month, such as January or February. If a family of four exceeds 12,000 gallons per month, there are serious leaks.
- Check your water meter before and after a two-hour period when no water is being used. If the meter changes at all, you probably have a leak.
- Identify toilet leaks by placing a drop of food coloring in the toilet tank. If any color shows up in the bowl after 10 minutes, you have a leak. (Be sure to flush immediately after the experiment to avoid staining the tank.)
- Examine faucet gaskets and pipe fittings for any water on the outside of the pipe to check for surface leaks.

THE FACTS ON LEAKS

10
percent of homes have leaks that waste 90 gallons or more per day

A leaky faucet dripping at the rate of one drip per second can waste more than
3,000 gallons
per year

Did you know?
Minor water leaks account for nearly

1
trillion gallons
of wasted water each year and is equal to annual household water use in nearly

A shower leaking at
10 Drips
per minute wastes more than
500
gallons per year

Repair
leaks by checking faucet washers and gaskets for wear and replacing them if necessary

11
million homes

Replace old toilets with WaterSense models & save

13,000
gallons of water savings for the average family

Homeowners
can save
10 percent on their water bills

look for
WaterSense
Meets EPA Criteria

 epa.gov/watersense

Learn more from
WaterSense



Celebrate World Water Day on March 22!

World Water Day, on March 22 every year, is about focusing attention on the importance of water. This year's theme is "groundwater" — or "making the invisible visible."

Groundwater is invisible, but its impact is visible everywhere.

Out of sight, under our feet, groundwater is a hidden treasure that enriches our lives.

Almost all of the liquid freshwater in the world is groundwater.

As climate change gets worse, groundwater will become more and more critical.

We need to work together to sustainably manage this precious resource.

Groundwater may be out of sight, but it must not be out of mind.

Click the button below to learn more.

Learn
More

Get ready for Spring with the Native Plant Sale!

Hey, plant lovers!

Trying to figure out what to add to
your yard this Spring?

Visit the Coastal Discovery Museum
on March 19 for their annual
Native Plant Sale!

Native plants have great
advantages, like requiring little
care and providing great benefits to
the local wildlife — plus helping you
save water, energy and money.

*(New to gardening? Local Master Gardeners will be at the sale to provide
advice and help you find the right plants!)*

Learn
More



Teach your kids what not to flush with this fun science experiment!

We know kids always want to ask
"Why?", so we made this fun science
experiment to show them exactly why
so-called "flushable" wipes can still
clog your pipes!

Print off this page and find more free

WHY CAN'T I FLUSH WIPES?
A SCIENCE EXPERIMENT TO TEST IF
"FLUSHABLE" WIPES REALLY DISSOLVE

MATERIALS:

- 2 CLEAR BOWLS OR CUPS OF WATER
- A SPOON
- A STOPWATCH OR TIMER
- TOILET PAPER
- "FLUSHABLE" WIPES

INSTRUCTIONS:

1. FILL 2 CLEAR BOWLS OR CUPS WITH WATER
2. ADD 2 SQUARES OF TOILET PAPER TO ONE CUP OR BOWL
3. ADD 1 "FLUSHABLE" WIPE TO THE OTHER CUP OR BOWL
4. STIR BOTH GENTLY WITH A SPOON
5. SET A TIMER FOR 10 MINUTES
6. OBSERVE IF EITHER THE TOILET PAPER OR THE WIPE DISSOLVED MORE. WHAT HAPPENS IF YOU STIR THEM AGAIN? WHAT IF YOU TOUCH THEM WITH YOUR FINGERS? DO THEY FALL APART?

Visit hhpsd.com to learn more about what not to flush.

HiltonHead
PSD

Pledge to save water with us in the Wyland National Mayor's Challenge!

My Water Pledge is a friendly competition between cities across the US to see who can be the most "water-wise." Mayors nationwide will challenge their residents to conserve water, energy and other natural resources on behalf of their city through a series of informative, easy-to-use pledges online.

Participants in the winning cities are eligible to win hundreds of prizes. By the way, your mayor doesn't have to participate for your city to win...

But every person makes a difference! Last year, the challenge awarded more than \$50,000 in prizes to nearly 300 residents in U.S. cities.

Plus! By taking part, you can nominate a deserving non-profit in your town to receive a community prize 2022 Toyota Highlander Hybrid.

WYLAND NATIONAL MAYOR'S CHALLENGE
FOR WATER CONSERVATION

**Take the pledge to save water.
Help win prizes for our city.**

mywaterpledge.com

Learn
More



Did your organization's Adopt-A-Stream certification recently expire?

Recertification classes are live with Clemson next week!

The course will be open from March 7th through 21st and is provided on the platform Canvas. If you have been certified in SC Adopt-a-Stream in the past, you will receive an email invite from "Canvas notifications@instructure.com," that

will be sent to you on March 7th (make sure to check spam folder). If you have accepted the email invite last time and set up your account, you are able to login and complete the course. In order to get recertified, you must complete the course including passing (80% or greater) the appropriate protocol exams.

Learn More

Please keep your meter clear of debris

As spring approaches, please make sure that you do not obstruct or cover your water meter in any way with turf, bushes, or other landscaping. Meters need to be kept clear of debris and accessible to the PSD at all times.



Hilton Head PSD Affiliations

We are proud to partner with the following organizations.





MORE
INFORMATION

